



Managing JDE security 950SuperGrid for EnterpriseOne

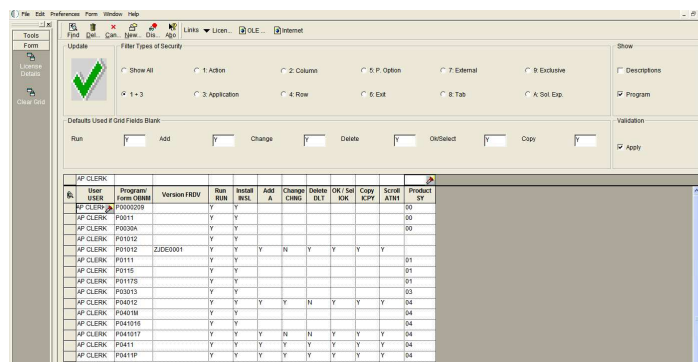
The All Out Family For E1	
Risk Reporting	Addresses access reporting & creates segregation of duties rules
3 Way SuperGrid	Fine tunes role based security & reviews/resolves complex multiple roles
950 SuperGrid	Replaces standard P00950 program and allows easy update of F00950 table settings
Project+	Automatic generation of security settings & customisation of action security
Risk Management	Creates rules for SOD between roles and keeps track of role allocation
CombiRoles	Identifies conflicts for a user and combines small roles into Super Roles

ALL Out for E1 is a comprehensive family of products that complements the standard security solution provided by Oracle.

Day to day security management - the SuperGrid is a direct replacement for the standard P00950 program. Its grid format enables you to update the "Y" and "N" settings in the F00950 table without having to use the clumsy exit bar interface in the standard program.

Keep the Auditors happy! - the program is Action Code Eligible - overcoming the major exposure inherent in the standard P00950 program.

All major security types are available so you can eliminate your day to day use of the standard program and significantly reduce the time you spend managing security.



ALL Out family of products – the Perfect Security Solution

ALL Out is a family of products that enable you to go from "Open to Closed" (Deny ALL in a Day), produce Compliance Reports and Segregation of Duties Rules and Reports. It provides a simple, easy to implement and cost effective solution for your security set-up.

INTEGRATED WITH



JD EDWARDS ENTERPRISEONE

For more information email ejdevos@das-europe.info or visit www.das-europe.info