



Managing JDE security Risk Management for EnterpriseOne

“Good business practice requires you to control, document, and secure critical processes”.

At the heart of an effective control environment is the identification of critical business processes and controlling potential conflicts between these processes – Segregation of Duties.

You can spend a tremendous amount of time and money creating a totally secure environment, resolve all your segregation of duties issues and, five minutes later, all the good work is undone when someone makes a change that results in a SOD breach.

You need a system that addresses the heart of the issue – ALL Out Risk Management

ALL Out Risk Management

You can use ALL Out Risk Management to create rules that represent segregation of duties issues between standard EI roles.

When roles are assigned to a user these rules are first checked to see if the assignment will create a conflict.

Segregation of Duties Lock

If someone attempts to allocate a role to a user that conflict with an existing role assignment then you can configure the system to lock-out.

Special authorization is then required to over-ride the lock.

Role Allocation Audit Trail

The product enables you to keep track of role allocation by forcing the identification of an authorising manager and the attachment of a document such as a Change Request Form.

Requests and Approvals

You can also decentralize the role allocation request process and have role allocation approvals managed centrally.

The All Out Family For E1	
Risk Reporting	Addresses access reporting & creates segregation of duties rules
3 Way SuperGrid	Fine tunes role based security & reviews/resolves complex multiple roles
950 SuperGrid	Replaces standard P00950 program and allows easy update of F00950 table settings
Project+	Automatic generation of security settings & customisation of action security
Risk Management	Creates rules for SOD between roles and keeps track of role allocation
CombiRoles	Identifies conflicts for a user and combines small roles into Super Roles

INTEGRATED WITH



JD EDWARDS ENTERPRISEONE

Works in all versions of EnterpriseOne from Xe through to B9

Limitations of standard EnterpriseOne

No Control over Role Allocation

Standard EI provides excellent security management features that operate at the program or data level.

It is excellent for controlling the use of individual programs.

No concept of Segregation of Duties

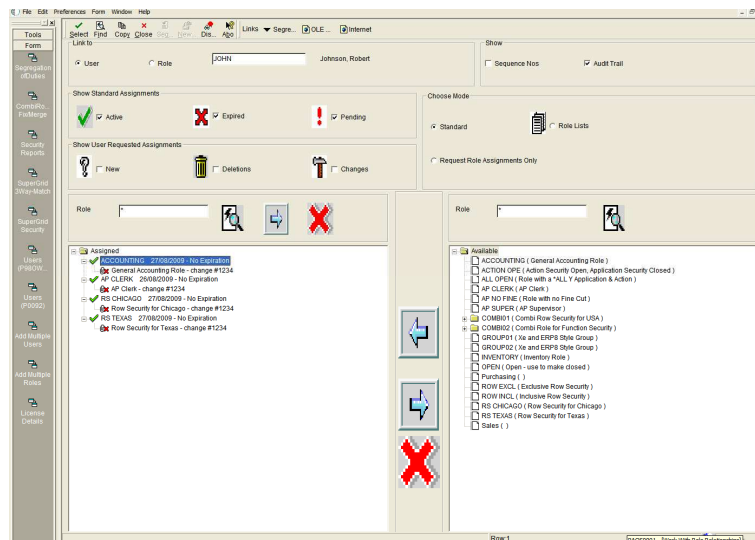
However, it is not possible to apply controls at the process level.

If a user can raise a Purchase Order and change the Vendor Master File there is a significant potential exposure for the organization.

Audit Trail too simple to be of value

The standard audit trail facility operates at the database level.

There is nothing that records who authorized a change or provides for the attachment of a change control document.



ALL Out Risk Management is available on subscription.

It provides a simple, easy to implement and cost effective solution for your security implementation and management.

For more information email ejdevos@das-europe.info or visit www.das-europe.info