

# Data Access Studio™ Report Scheduler

## KEY BENEFITS

*Integrated with JD Edwards EnterpriseOne and World applications*

*Integrated with Data Access Studio*

*Schedule tasks*

*Deliver output to email or directory*

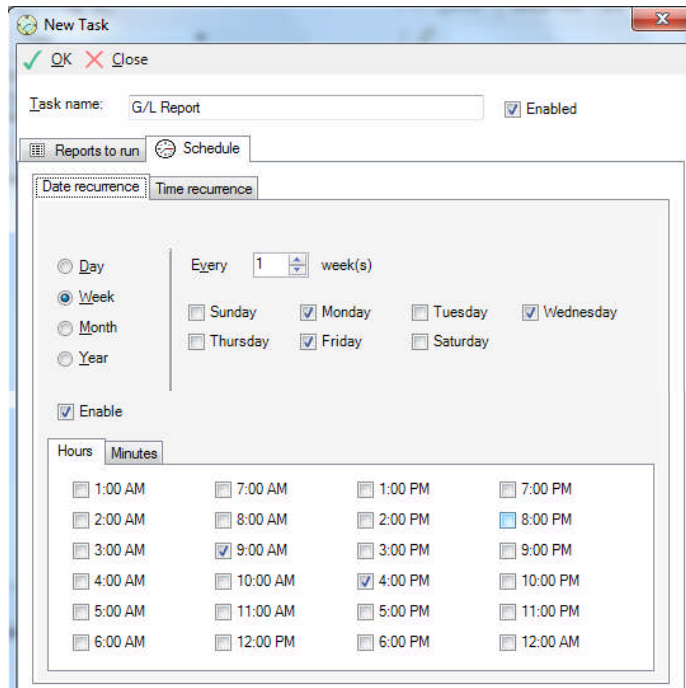
*Export results as MS-Excel, PDF, TSV, XML or HTML*

## Data Access Studio

Data Access Studio has been the preferred reporting solution for JD Edwards World or EnterpriseOne for more than 6 years for over 200 customers. With its unique easy to understand user interface and its integration with the native JD Edwards security and Data Dictionary it delivers immediate results to your bottom-line.

## Data Access Studio Report Scheduler

The Report Scheduler is designed for Data Access Studio users who need to automate report execution. The Report Scheduler allows you to specify which reports you want to run when. You may specify any Date/Time pattern. Imagine you would want to run a report on Monday, Wednesday, and Friday at 9:00 AM and 4:00PM each day. The Report Scheduler then distributes the reports to end users either by email or places the results in a directory on disk.



Sample of Report Scheduler task set-up screen

## Feature/Function Highlights

- ✓ Create a new Report Scheduler task as one or a set of multiple reports
- ✓ Applies all native JD Edwards security
- ✓ Temporarily disable a task from running but keep the task definition
- ✓ Specify run intervals by Year, Month, Week or Daily and Time
- ✓ Export Presentation (dashboards) as MS-Excel, PDF or HTML
- ✓ Export data as MS-Excel, PDF, HTML, TSV or XML
- ✓ Select multiple output formats at the same time
- ✓ Select output destination email or directory on disk
- ✓ Choose when the task needs to stop – after a specific date, after x occurrences or with no end date
- ✓ Edit, delete and copy tasks for easy recreation
- ✓ Encrypt your PDF with your JD Edwards password

## System Requirements (on top of Data Access Studio requirements)

- ✓ In order to utilize the Report Scheduler, you need to run Data Access Studio on/as a web server
- ✓ Microsoft Excel (2010, 2007 recommended). Highest version of Excel for your organization
- ✓ 1 GB extra RAM

## Licensing

The Report Scheduler is licensed as a separate add-on to Data Access Studio.

## In Summary

By providing breakthrough design simplicity, On-Demand Reporting™ by Data Access Studio™ lets the business user create reports that previously would not have been possible. With this new agility, businesses can adapt faster and more economically to the challenges they face.

## **CONTACT INFORMATION**

[ejdevos@das-europe.info](mailto:ejdevos@das-europe.info)

[www.das-europe.info](http://www.das-europe.info)

+31 (0)6 53 899 736

Copyright 2010 ReportsNow. All Rights Reserved.

This document is provided for information purposes only, and the contents hereof are subject to change without notice. This document is not warranted to be error-free, nor is it subject to any other warranties or conditions, whether expressed orally or implied in law, including implied warranties and conditions of merchantability or fitness for a particular purpose. We specifically disclaim any liability with respect to this document, and no contractual obligations are formed either directly or indirectly by this document. This document may not be reproduced or transmitted in any form or by any means, electronic or mechanical, for any purpose, without our prior written permission.